

Quantum.

VS2124

FOR VIDEO SURVEILLANCE
RECORDING & MANAGEMENT



DATASHEET

Quantum's VS2124 video surveillance appliance is a purpose-built system for video recording and management. The VS2124 incorporates enterprise-class reliability and redundancy—all while remaining simple to configure, operate, and maintain. It can be installed and ready to use in less than one hour.

The VS2124 supports over 400* video surveillance cameras and provides 240 TB of space (usable) to store video surveillance images, all in 2U of rack space.

FEATURES AND BENEFITS

- **Higher Performance, Lower Capital Expense:**

The VS-Series is purpose built for video recording and management, which means it can record more cameras and run your VMS infrastructure all on the same hardware, reducing capital expense. The VS2124 can support over 400* video surveillance cameras and provides 240 TB of space (usable) to store video surveillance images, all in 2U of rack space.

- **Easy to Operate and Maintain to Reduce Operational Expense:** VS-Series servers are pre-installed with certified VMS applications, and can be set up and configured in under an hour.

- **Reliability and Redundancy to Reduce Risk:** The VS2124 incorporates multiple components for reliability and redundancy. The VS2124 can lose up to 4 data drives and continue to

function, without the loss of any video. All drives are hot swappable. It includes redundant, hot-swappable fans and power supplies. Redundant, hot-swappable, solid-state drives are used for the VS-Series software as well as the operating system and VMS application execution.

- **Backed by World-Class Service and Support:** Quantum products are backed by Quantum's global support organization, providing world-class pre- and post-sale services to tens of thousands of customers around the world 24x7x365.

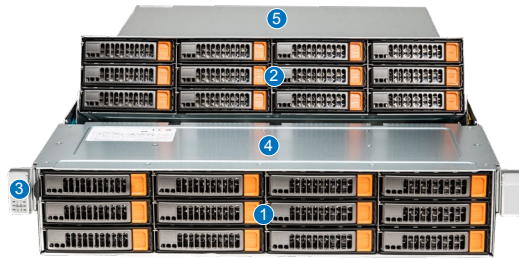
*VS2124 has been verified to support over 400 2MP cameras at 30 fps with server-based motion detection.

LEARN MORE:

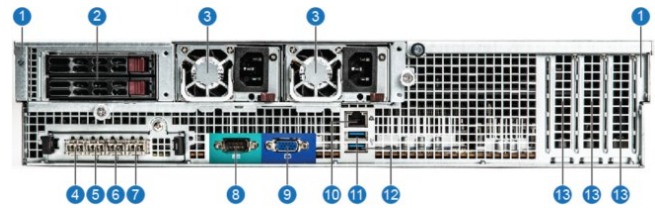
www.quantum.com/vs-series

TECHNICAL SPECIFICATIONS

VS2124 FRONT VIEW



VS2124 REAR VIEW



Item	Description	Function
1	Front Drives (12)	12 HDDs used for Video Surveillance Storage
2	Mid-Chassis Drives (12)	12 HDDs used for Video Surveillance Storage
3	Front Power and LEDs	Power Switch, Reset Button, LEDs for: Power, HDD Activity, Network Activity, Power Failure Notification, Information including fan failure and UID notification
4	Front Chassis Cover	
5	Rear Chassis Cover	

Item	Description	Function
1	Rack Ear Brackets	Used to attach chassis to the rack
2	Rear SSD Bays (2)	Each bay holds one 2.5" 480 GB SSD for Boot/OS/ Application; redundant and hot swappable
3	Power Supply Modules (2)	1600 W, 100 – 240 VAC, redundant and hot swappable
4	Management Port	10 GbE Optical SFP+ transceiver, used for managing VMS and system
5	Camera Net Port	
6	Camera Net Port	10 GbE Optical SFP+ transceiver, used to connect to network(s) for cameras
7	Camera Net Port	
8	VGA Port	Console port video output
9	Com1 Port	Serial port
10	BMC/IPMI Port	For out-of-band and lights-out management of the server hardware
11	USB1 (USB 3.0)	
12	USB0 (USB 3.0)	USB port (keyboard/mouse)
13	PCI Slots (3)	Used for add-on PCI cards including the dual-port 10 GbE optical SFP+ card used for replication and failover

MAXIMUM NUMBER OF CAMERAS

400 2MP @ 30 fps with server-based motion detection

DIMENSIONS

Form Factor:	2U Rack Mount
Width:	17.2" (437 mm)
Height:	3.5" (89 mm)
Depth:	34" (863 mm)
Gross Weight:	120 lbs (54.5 kg)
Rail Kit:	Rails are 41" long

COMPUTE SPECIFICATIONS

CPU:	Dual Intel Xeon Gold 6130 CPUs (2.10 GHz, 22 M Cache)
CPU Cores:	32 Total
RAM:	128 GB DDR4-2666
Software:	Quantum CSP stack with Hypervisor, Quantum CBA for remote monitoring
Operating System for VMs:	Windows Server 2019 Standard Edition

STORAGE SPECIFICATIONS

VM/OS/Boot:	Mirrored (RAID 1), Hot-Swappable 480 GB Solid-State Drives
Storage for VS:	288 TB raw; 240 TB (218.3 TiB) usable 24 Enterprise-Class 12 TB HDD
Protection:	Two RAID 6 sets & RAID controller with SuperCap cache protection
Support for Archiving:	Yes, to external NAS

NETWORK CONNECTIONS

Cameras & Management:	Four 10 GbE Optical SFP+
Synchronous Replication & Failover:	Two 10 GbE Optical SFP+ [Note: requires additional VS-Series appliances for replication/failover]
Out-of-Band Server Mgmt.:	One 1 GbE (RJ45)

OTHER CONNECTIONS

USB:	2 USB 3.0 (Type A)
Serial Port:	9-pin standard COM
Monitor Port:	15-pin standard VGA

POWER/ELECTRICAL/FANS

Power Supplies:	Redundant, Hot-Swappable 1600 W 80 PLUS® Titanium Certified
Power Receptacles:	Two IEC 320 C14
AC Voltage:	100 – 240 VAC, 50 – 60 Hz
Fans:	5 HD Hot-Swappable

OPERATING ENVIRONMENT

RoHS Compliant	
Operating Temp:	10 °C – 35 °C (50 °F – 95 °F)
Non-operating Temp:	-40 °C – 60 °C (-40 °F – 140 °F)
Operating Rel. Humidity:	8% – 95% (non-condensing)
Non-operating Rel. Humidity:	5% – 95% (non-condensing)
Humidity:	



Quantum technology and services help customers capture, create, and share digital content—and preserve and protect it for decades at the lowest cost. Quantum's platforms provide the fastest performance for high-resolution video, images, and industrial IoT, with solutions built for every stage of the data lifecycle, from high-performance ingest to real-time collaboration and analysis and low-cost archiving. Every day the world's leading entertainment companies, sports franchises, research scientists, government agencies, enterprises, and cloud providers are making the world happier, safer, and smarter on Quantum. See how at www.quantum.com.

www.quantum.com
800-677-6268